

Chapter 21

Configuring CBF Interfaces

This chapter describes how to create a connection-based forwarding (CBF) interface. CBF interfaces are created automatically when you create a Switched Multimegabit Data Service (SMDS) tunnel connection. However, you can also create a CBF interface individually.

This chapter contains the following sections:

- Overview on page 251
- References on page 252
- Creating CBF Interfaces on page 252

Overview

CBF uses dedicated layer 2 interfaces, called CBF interfaces, that are configured at the top of interface columns for SMDS tunnel connections. CBF interfaces used in connection-based forwarding are analogous to IP interfaces used in IP routing.

A CBF interface runs over an SMDS trunk interface. Only one CBF interface is permitted per SMDS interface. The CBF interface forwards SMDS traffic among SMDS trunk interfaces.

CBF provides a simple mechanism for forwarding non-IP traffic directly between E-series devices. It is a method of forwarding frames in which forwarding decisions are based only on the identity of the ingress interface. In particular, no part of a packet's contents is used to determine how a packet should be forwarded.

CBF forwards frames along connections configured between pairs of interfaces. Frames received on a connection's ingress interface are forwarded directly to that connection's egress interface. The packet is transmitted from ingress to egress forwarding interfaces as the raw layer 2 payload received from the layer 2 interface. Both the ingress and egress interfaces are SMDS-encapsulated and have CBF interfaces associated with them. Once the connection between the ingress and egress interfaces is made, traffic begins to flow.

References

See the following related chapters for additional information:

- *Chapter 22, Configuring CBF Interface Connections*
- *Chapter 29, Configuring SMDS Interfaces*
- *NMC-RX User Guide, Vol. 2, Chapter 9, Configuring IP Tunnel Interfaces*
- *NMC-RX User Guide, Vol. 2, Chapter 10, Configuring Tunnel Connections*

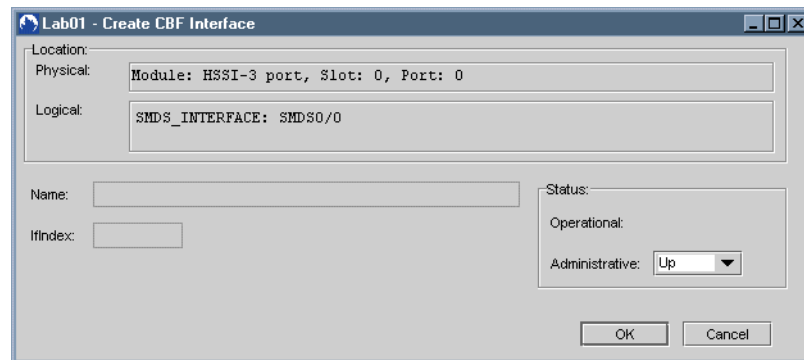
Creating CBF Interfaces

When you create an SMDS tunnel connection, CBF interfaces are created automatically, but you can also create these interfaces individually.

To create a CBF interface:

1. In the Instance Explorer, select an SMDS interface.
2. Right-click, select Create, and click CBF Interface.

The Create CBF Interface dialog box appears.



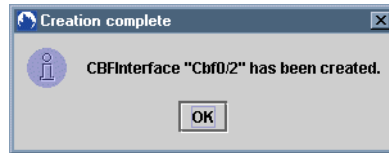
The CBF interface parameters described in Table 73 are generated automatically.

Table 73: CBF Interface Parameters

| Parameter | Description |
|----------------|--|
| Name | Identifies the interface; generated automatically |
| IfIndex | Identifies the interface on the particular line interface; generated automatically |
| Operational | Current operational status of the interface |
| Administrative | Desired status of the interface: Up/Down; default: Up |

3. Click OK.

The Creation complete dialog box appears.



4. Click OK.

