

JUNIPER CHAMPION PROGRAM

Learning Academy Quick Start Guide

Summary

This guide will provide you with instructions to “get started” on your Juniper Networks learning path. You will learn how to set up your profile, learn how to navigate the site and learn how to access the latest Learning Academy promotions.

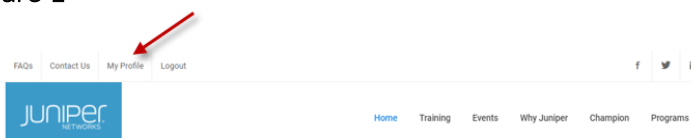
Getting Started

The first time you enter the Learning Academy, you are required to select your Core Function or role within your organization, “Sales” or “Technical,” under the tab [My Profile](#) as shown in Figure 1. This important decision will determine the type of courses prescribed to you each time you log into the Learning Academy. You can always return to your My Profile tab if you decide to make any changes.

Core Function Basic Definition

- Sales - Account Manager (JNSA)
- Technical – Pre-Sales Engineer (JNSS) and Champion Program

Figure 1



Completing your profile

1. The Core function and Time zone are required entries.

2. Entering your CertManager ID is optional but highly recommend. If you know your CertManager ID, it will assist us in offering you a complete view of the sales and technical training you have completed at Juniper Networks.

Quick Start Guide

3. In order for your records to be included with your company's compliance requirements, please allow record sharing by checking the box. Press Save.

Record Sharing

☒ Yes, please allow my company to view my Learning Academy training records.

Home Page

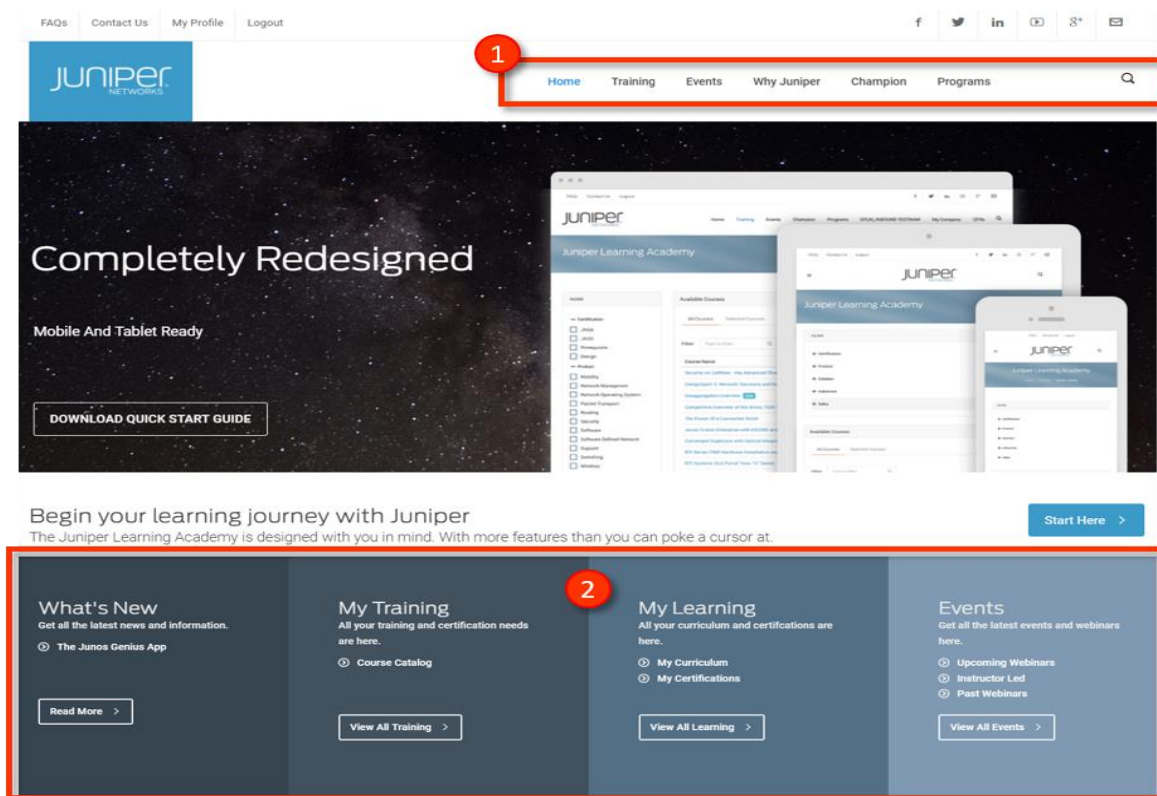
Now you are ready to take courses.

1. **Figure 2** is the Home Page. It is broken into two main sections.

Section 1 – Navigation bar – always present as you complete courses in Learning Academy.

Section 2 – Information section to view your curriculums, transcripts, and find the latest webinars.

Figure 2



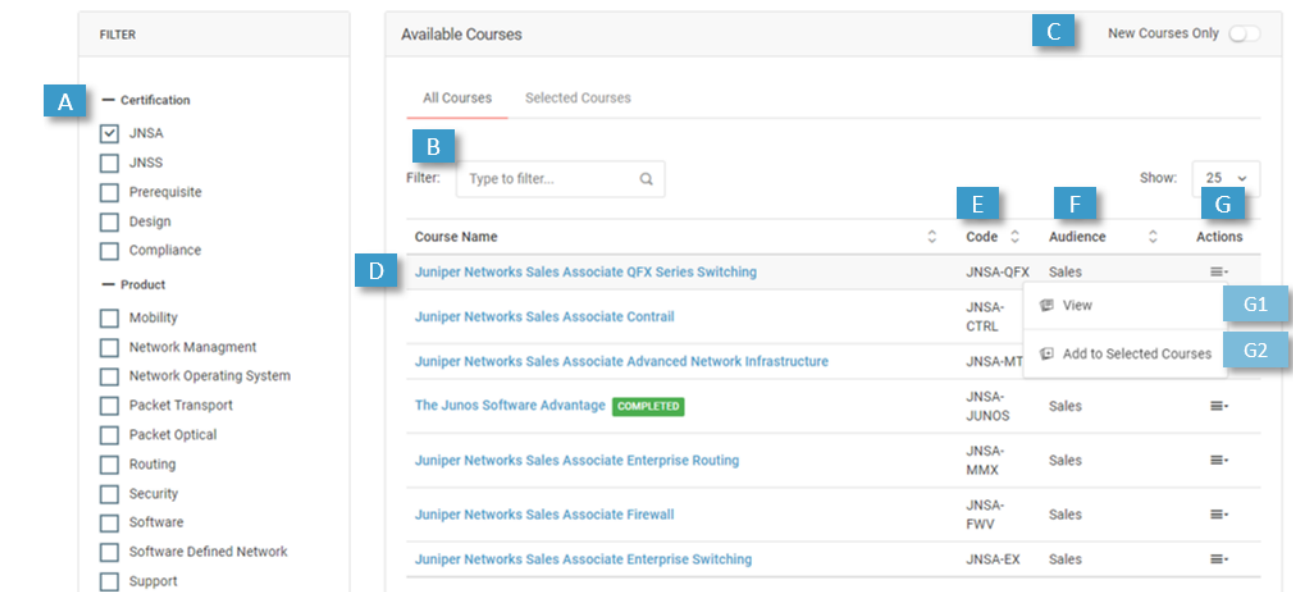
Home Page - Navigation

The Home page provides you with this information to take a course and learn more about Juniper partner programs. The Champion program is designed for our technical partners. The goal of this site is to provide you with clear instructions to join Juniper Networks' technical community.

The screenshot shows the Juniper Learning Academy homepage. At the top, there's a navigation bar with links: FAQs, Contact Us, My Profile, Logout, and social media icons. Below this is a main header with the Juniper Networks logo and a navigation menu with tabs: Home, Training (A), Events (B), Why Juniper (C), Champion (D), Programs (E), and a search icon (F). The main content area features a large banner titled 'Completely Redesigned' with the text 'Mobile And Tablet Ready' and a 'DOWNLOAD QUICK START GUIDE' button. Below the banner, there's a section titled 'Begin your learning journey with Juniper' with a 'Start Here' button. The bottom section is divided into four columns: 'What's New' (G) with a 'Read More' button, 'My Training' (H) with a 'View All Training' button, 'My Learning' (I, J) with a 'View All Learning' button, and 'Events' (K, L, M) with a 'View All Events' button. The 'My Learning' section lists 'My Curriculum' and 'My Certifications'. The 'Events' section lists 'Upcoming Webinars', 'Instructor Led', and 'Past Webinars'.

A – Access to Course Catalog and your Learning Paths	H – Select courses based on personal needs
B – Access upcoming and past webinars	I – Pre-built programs and initiatives curriculums
C – Find information on “Why Juniper”	J – Print your certificates and shows courses taken
D - Find information on Champion program	K – Register for upcoming webinar
E – Find information on JPA and PSS	L – Register for ILT or local events
F – Search Learning Academy courses	M – View past webinar recordings
G – Find latest news and information	

Training -> Course Catalog



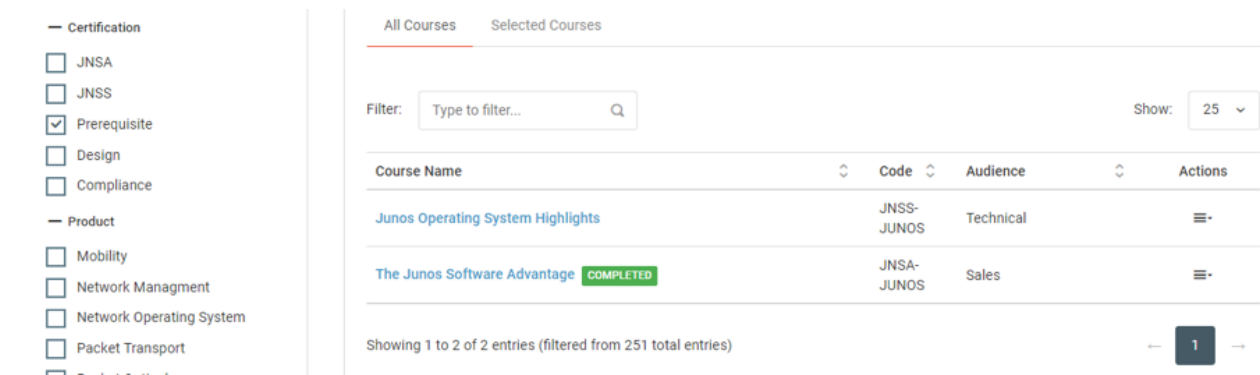
A – Filter course by subject	F – Target Audience
B – Filter by keyword	G – Click “Actions” for more options
C – View recently added courses	G1 – View and complete course
D – Select title to view course description	G2 – Select to build your own curriculum
E – Certification / Course Code	

On-boarding Prerequisite Courses

- There are two Junos Fundamentals courses.
 - Select “The Junos Software Advantage” if you plan to complete the JNSA and Sales courses.
 - Select “Junos Operating System Highlights” if you plan to complete the JNSS and Technical courses.

Figure 3 displays the options by selecting the Prerequisite checkbox in the navigation section.

Figure 3

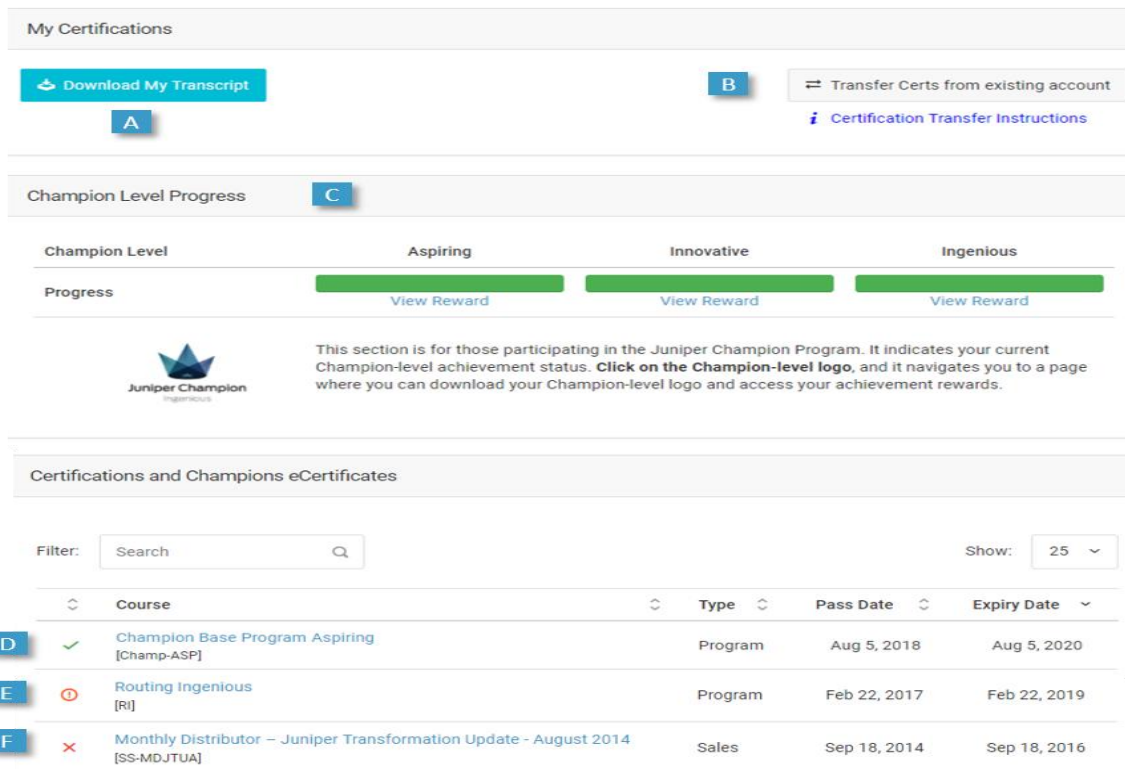


Training -> Course Catalog -> Selected Courses



A - Complete the course you selected in Course Catalog item G2	C - Select button to view and start the curriculum track
B - Click "Actions" icon for more options	D - Remove the course from selection area

Training -> My Certification



A - Download PDF document of all courses taken	D - Learning Academy active course
B - Transfer certifications in Learning Academy	E - Learning Academy expiring course
C - Champion Level Progress - if participating	F - Learning Academy expired course

Please contact learningacademy@juniper.net for support.

About Juniper Networks

Juniper Networks brings simplicity to networking with products, solutions and services that connect the world. Through engineering innovation, we remove the constraints and complexities of networking in the cloud era to solve the toughest challenges our customers and partners face daily. At Juniper Networks, we believe that the network is a resource for sharing knowledge and human advancement that changes the world. We are committed to imagining groundbreaking ways to deliver automated, scalable and secure networks to move at the speed of business.

Corporate and Sales Headquarters

Juniper Networks, Inc.
1133 Innovation Way
Sunnyvale, CA 94089 USA
Phone: 888.JUNIPER (888.586.4737)
or +1.408.745.2000
Fax: +1.408.745.2100
www.juniper.net

APAC and EMEA Headquarters

Juniper Networks International B.V.
Boeing Avenue 240
1119 PZ Schiphol-Rijk
Amsterdam, The Netherlands
Phone: +31.0.207.125.700
Fax: +31.0.207.125.701

