

# FORTIFYING NETWORK DEFENSES WITH JUNIPER AI-NATIVE SECURITY SOLUTION BRIEF

Boost Productivity Through Confidence-Building Collaboration Juniper Enables Network And Security Teams With A Unified View Across The Entire Infrastructure.

## THE CHALLENGE

**40%**

Executives cite cyberthreats as their #1 business risk

[\(source\)](#)

*Bridging the networking and security gap*

*Networking and security operational challenges are exasperated by siloed telemetry collection that leaves each team with incomplete visibility for analytics and decision making. When clear signals are missed because they aren't easily shared, analyzed, and acted upon, it leads to greater risk of data breaches and performance issues that can impact end user experiences.*

## THE CAPABILITIES YOU NEED

**99.54%**

Security effectiveness for Juniper's SRX4600 Firewall

[Read the report](#)

### Unified network and security insight

AI-Native Security increases IT productivity and reduces risk through shared insights made possible by unifying the network and security operations experience.

- **The industry's first unified network and security ops platform**

A single platform to manage policy and centralize visibility for [wired](#), [wireless](#), [WAN](#), and [data center security](#), [networking](#), and access

- **A fully managed AI-Native scalable and agile architecture**

A common telemetry data lake represents your whole environment, enabling IT teams to accelerate resolution with increased accuracy, real-time insight, and advanced threat mitigation

- **Complete and accurate threat detection at wire-speed**

Combined telemetry and AI-Native intelligence backed by proven, [99.54% security efficacy](#) across edge, campus, cloud, and data center to stop threats without impacting users

- **Exceptional operational agility for your entire IT organization**

Bridge networking and security teams by integrating [AIOps](#), networking, and security under one platform that delivers complete environment visibility and important context behind each action

## THE ANSWER: AI-NATIVE SECURITY

### What is AIOps?

[Artificial intelligence for IT operations](#), aka AIOps, is a way to use AI to maintain IT infrastructure.

### Operate and innovate at the speed of the market

Juniper AI-Native Security helps improve productivity with an integrated suite of networking, security, and AIOps—all accessed from a common Mist AI console. It applies visibility, intelligence, and policy enforcement across your entire network to achieve

industry-leading [99.54% security efficacy](#). Plus, faster threat identification and response is driven by the unmatched visibility and advanced AI insights it delivers.

Juniper AI-Native Security helps drastically reduce vulnerabilities while simplifying network and security management.

## HOW IT WORKS

### Ensure protection everywhere with AI-Native Security

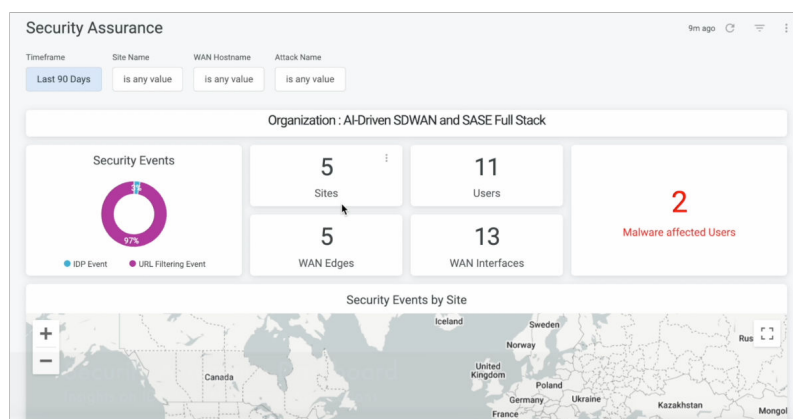
Edge security is necessary, but it's not enough to combat cyberthreats alone. Mist AI manages Juniper security solutions by going deeper to continuously secure your entire infrastructure with holistic visibility, advanced threat detection, and automated issue remediation. It extends protection everywhere against threats like ransomware that spread using lateral movement within a trusted environment.

- **Close visibility gaps and stop breaches**

Consolidating redundant tools and unifying telemetry completes end-to-end visibility and leverages the network architecture for policy enforcement

- **Protect existing investments during modernization**  
Seamlessly migrate legacy architectures to new solutions with minimal disruption and cost by managing existing security and network infrastructure along with new security solutions
- **Compliance and regulatory alignment**  
Unified visibility and policy management across networking and security simplifies implementing compliance controls and reporting
- **Drive cost efficiency**  
Avoid redundant solutions and find synergies in tools, training, and processes by unifying networking and security management

## CORE CAPABILITIES



### Up to 85%

Reduction in OpEx

[\(source\)](#)

### Enhanced incident response with security assurance

Confident real-time threat response using comprehensive security event visibility and persona-based policy activation

### SRX Series Firewall visibility and policy integration

Protect your network edge, data center network, and cloud applications everywhere, mixing physical, virtual, and containerized form factors

### Zero Trust security with SSR

Gain inherent Zero Trust access control, segmentation, secure vector routing, and centrally managed and analyzed URL filtering

### **Proven 99.54% security efficacy**

Increase productivity and response time using telemetry and AI that doesn't distract with low priorities, false positives, and inaccurate resources

### **Unified networking and security platform**

Reduce silos and miscommunication to work closer, foster transparency, and align priorities with a single networking and security experience

### **Centralized and common policy configuration**

Improve security policy enforcement by removing complexity with one policy engine to simplify configurations, reduce user error, and speed up deployments

### **Zero Touch Provisioning (ZTP)**

Quickly and correctly deploy new equipment—without local expertise—by simply scanning the device's QR code or with network auto-install support

## **HOW WE DELIVER**



[ServiceNow](#) keeps employees connected, productive, and secure.



[Seacoast Bank](#) uses AI-driven insights to improve network reliability.

## OUR ADVANTAGE

### Powering exceptional operational agility

Networking teams ensure network performance while security protects your business. Working together, they continuously meet growing demands. Only Juniper AI-Native Security with industry-leading AIOps integrates networking and security in a unified portal to power the collaborative efforts required to optimize performance with security measures to deliver exceptional operational agility.

## WHY JUNIPER

### The NOW Way to Network

Juniper Networks believes that connectivity is not the same as experiencing a great connection. [Juniper's AI-Native Networking Platform](#) is built from the ground up to leverage AI to deliver exceptional, highly secure, and sustainable user experiences from the edge to the data center and cloud. Additional information can be found at Juniper Networks ([www.juniper.net](http://www.juniper.net)) or connect with Juniper on [X](#) (Twitter), [LinkedIn](#), and [Facebook](#).

## MORE INFORMATION

To learn more about Juniper AI-Native Security, visit <https://www.juniper.net/us/en/security.html>

---

### Corporate and Sales Headquarters

Juniper Networks, Inc.  
1133 Innovation Way  
Sunnyvale, CA 94089 USA **Phone:**  
**888.JUNIPER (888.586.4737)**  
**or +1.408.745.2000**  
**www.juniper.net**

### APAC and EMEA Headquarters

Juniper Networks International B.V.  
Boeing Avenue 240  
1119 PZ Schiphol-Rijk  
Amsterdam, The Netherlands **Phone:**  
**+31.0.207.125.700**