

Mist and Speak to IoT Deliver Pandemic-proof Campus Experience using Voice AI

The Juniper wireless platform, driven by Mist AI™, and the Speak to IoT universal voice platform offer a secure, handsfree, Voice AI-powered system to promote pandemic-proof campus experiences. Users can obtain people count and occupancy information on their mobile phones using intuitive, multi-lingual, natural human voice queries with Amazon Alexa, Google Assistant, and other cutting-edge voice assistants.

THE CHALLENGE

Large and complex venues such as hospitals, universities, corporate offices, exhibition centers, factories, and shopping malls face a challenge in figuring out how people are assembling in various campus parts. Even if IT systems can derive that information, it is practically impossible or inconvenient to make this information accessible to all the occupants, visitors, and stakeholders in a simple, intuitive manner. In the post-COVID era, it is crucial to have this information readily available to comply with health and social distancing guidelines mandated by regulatory authorities.

THE MIST-SPEAK TO IOT SOLUTION

The Mist-Speak to IoT pandemic-proof campus solution combines Wi-Fi location, Geomagnetic Data Points, and Bluetooth Low Energy (BLE) beacons to allow users to quickly find how many people are there in various parts of campus. Users can use Amazon Alexa, Google Assistant, etc. apps on their mobile phones or respective smart speakers located throughout the campus to discover this information using intuitive, natural language queries.



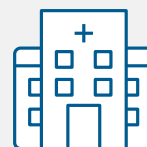
Enterprise-grade



Voice AI powered



Intelligent platform



Pandemic-proof



Campus Experiences

FEATURES BENEFITS

- **Intuitive Voice Experience** – Users don't need any training or any downloads for this self-explanatory, natural language-based voice query experience
- **Manageable Service** – Organize and segment your data so that users can find relevant information about various parts of a campus
- **Scalable, Cost-effective System** – By leveraging BLE beacons and Wi-Fi infrastructure, you can quickly put the population and occupancy information in people's hands without spending on giant display screens or deploying costly hardware components
- **Intelligent Alerts** – Configure the system to generate alerts for occupancy limit violations in any part of the campus to ensure utmost health and safety
- **Real-time Information** – The solution provides the most up-to-the-minute information about occupancy counts leveraging the BLE and Wi-Fi infrastructure elements



The Mist-Speak to IOT Solution Components

MIST SOLUTION COMPONENTS

Mist cloud – All wireless deployment, operational, and management functions are handled via the Mist cloud, which delivers the following Wi-Fi and Bluetooth LE services:

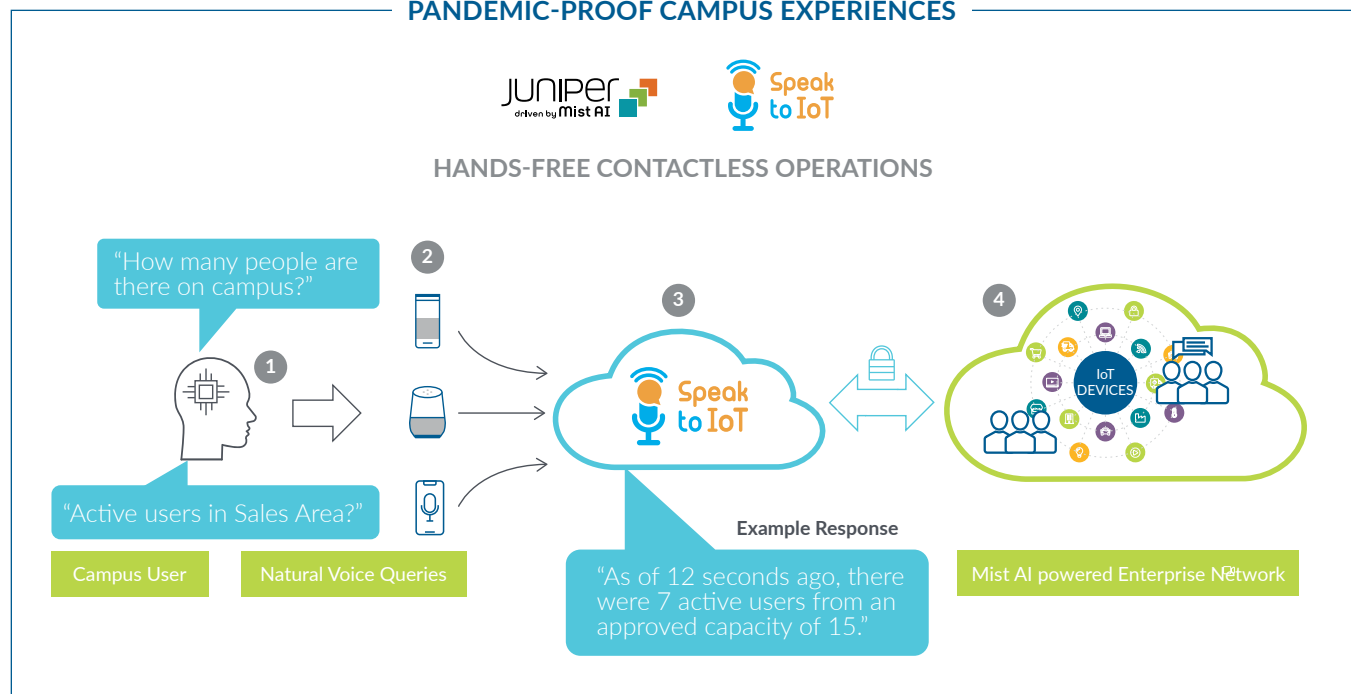
- **Wi-Fi Assurance** – Includes user service levels, anomaly detection, automated event correlation for troubleshooting, dynamic packet capture, policy configuration, guest WLAN access, and more
- **Marvis Virtual Network Assistant** – Provides natural language queries with integrated help desk functionality for rapid and simple root cause determination and problem resolution while realizing the self-driving network with its Marvis Actions framework
- **Location Management** – Provides location information about Wi-Fi, BLE, etc. clients
- **Juniper Access Points** – Deployed on-premises for Wi-Fi, BLE, or IoT access

SPEAK TO IOT COMPONENTS

Speak to IoT cloud – Following cloud components provide everything required for the solution:

- **Secure API** – Secure client to Mist APIs for collecting static and dynamic information about the organization hierarchy
- **Map Maker** – Create dynamic zone overlay maps to enhance the end-user visual experience
- **Voice Applications** – Users can invoke these voice applications in Amazon Alexa and Google Assistant using specially dedicated keywords
- **Query Engine** – Backend components to consumer Mist API information and serve end users' voice queries in real-time
- **Management and Analytics Engine** – Manage maps, zones, names & aliases, query analysis. etc. all from a single interface

PANDEMIC-PROOF CAMPUS EXPERIENCES



The Handsfree Experience

Intuitive, Voice-powered, End-user Experience to Promote Pandemic-proof Campuses and Safe Return to Work.



Summary

Use the power of natural voice AI, Mist location services, and Speak to IoT universal voice platform to create contactless, intuitive, and highly user-friendly enterprise experiences

It is always challenging to expose robust IT infrastructure systems' capabilities to the end-user level in an innovative manner. A wide range of integration complexities for web applications, mobile interfaces, corporate firewalls, security policies, etc., add fuel to the fire in weakening the stakeholder experience. Voice AI provides a refreshing multi-lingual user experience in a contactless, hygienic, and democratized manner without compromising any IT constraints. End-users can simply access various population density services using smart speakers like Amazon Alexa, Google Assistant, or corresponding apps on their mobile phones. The contactless component gives a vital relief in an infection-prone healthcare environment. It offers an additional handsfree command channel in an industrial setup where it is critical to keep employees' eyes and hands on the primary task. From hygiene and workplace safety to a training-free end-user experience, Voice AI innovation will become the face of the IT infrastructure.

Next Steps

To learn more about the joint Mist-Speak to IoT solution, please contact your Speak to IoT or Mist representative, or visit www.speaktoiot.com and www.mist.com.

About Mist

Mist built the first AI-driven Wireless LAN (WLAN), making Wi-Fi predictable, reliable, and measurable and enables scalable indoor location services like wayfinding, proximity messaging, and asset visibility. In addition, Mist's AI technology plays a key role in bringing automation and insight across the full IT stack, delivering seamless end-to-end user experiences and substantial IT cost savings. In 2019, Mist was acquired by Juniper Networks and operates as a business unit focused on the AI-Driven Enterprise which combines Mist's next-generation Wireless LAN (WLAN) platform with Juniper's best-in-class wired LAN, SD-WAN and security solutions to deliver unsurpassed end-to-end user and IT experiences. For more information, visit www.mist.com.

About Speak to IoT

Speak to IoT is a simple, secure, patent-pending platform to connect smart IoT devices and systems to all intelligent voice assistants. "Connecting everything through voice" is the vision behind Speak to IoT's patent-pending, universal, all-in-one, mobile & voice AI platform. It can manage any Wi-Fi capable device, system, or process with Amazon Alexa, Google Assistant, Samsung SmartThings, or other prominent voice assistants seamlessly. Its goal is to leverage natural voice as the primary human-machine interface and avoid several mobile and desktop IoT applications cluttering and confusing the user experience. Speak to IoT partners with hardware manufacturers in selected geographies offering complete, end-to-end, intelligent IoT appliances (like [SMART INDIA](#)) to consumers and enterprises. For more information, visit www.speaktoiot.com.